

(Figure 1-x: frontispiece - untitled)

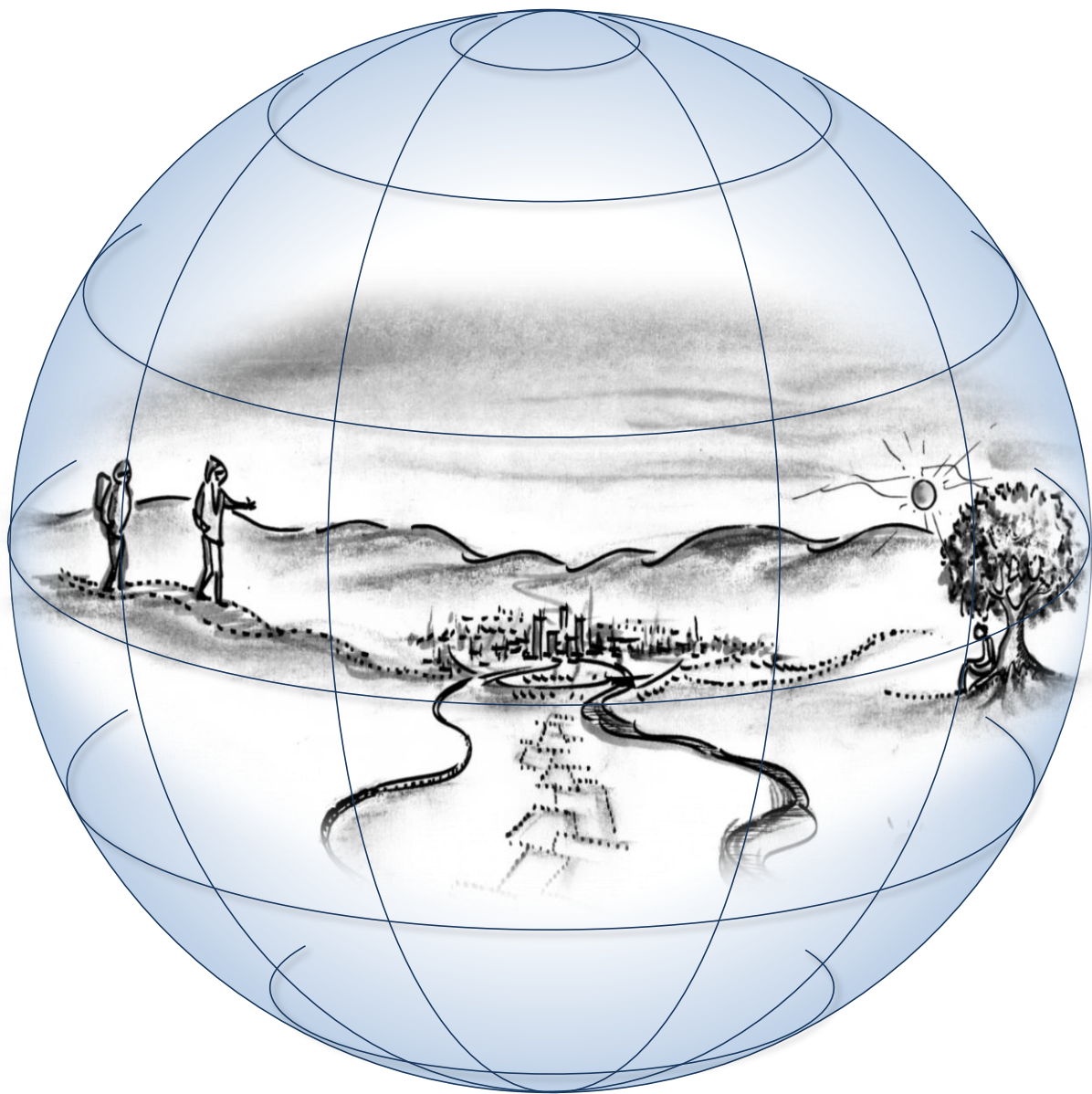
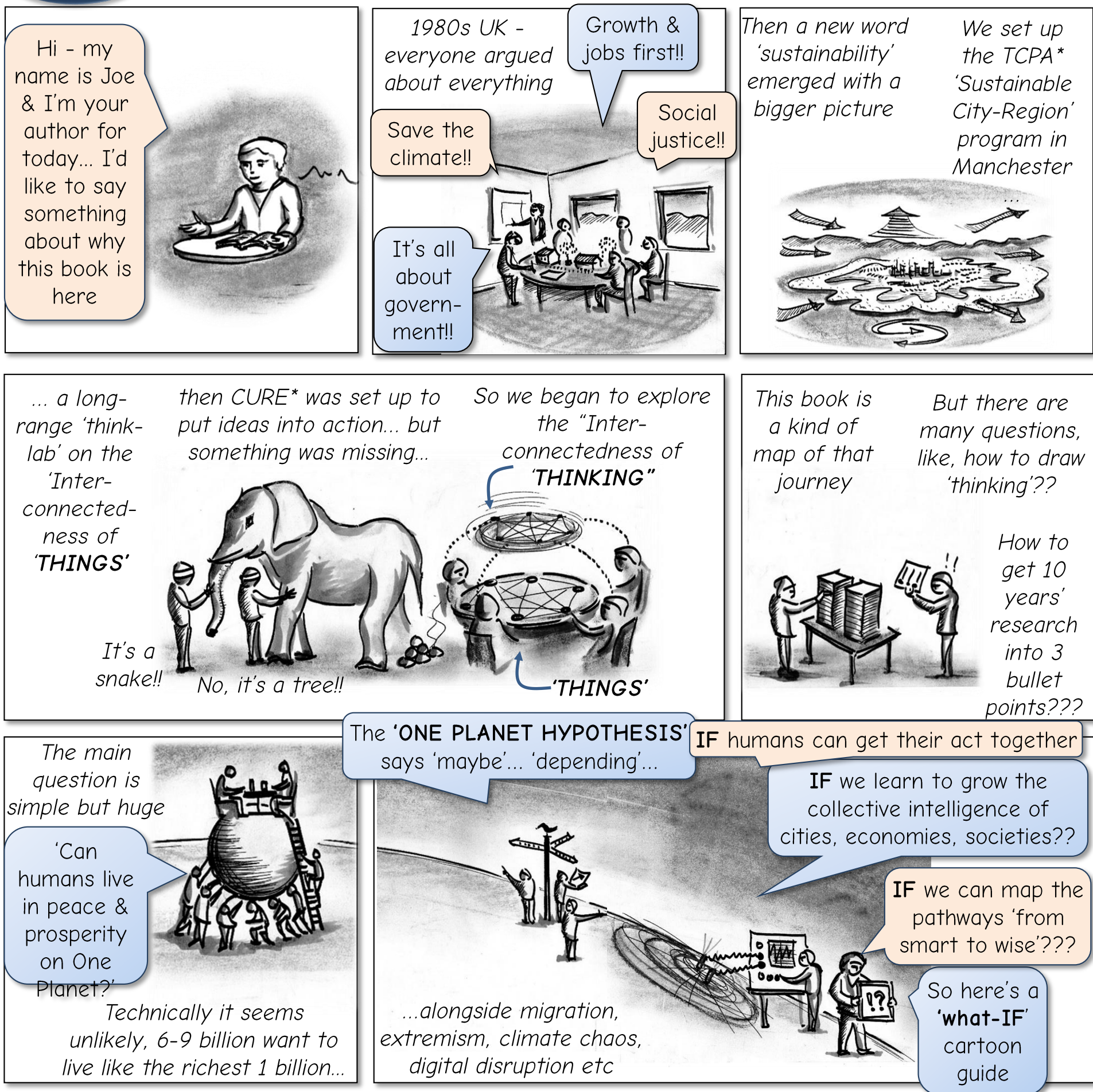


Figure
1-1

DEEPER QUESTIONS

On why this book is here, and where its journey might lead



*TCPA = Town & Country Planning Association, originators of the Garden City concept

*CURE = Centre for Urban & Regional Ecology (2000-2013): Collaboratory for Urban Resilience (2013-2020)

Figure
1-2

WIDER VISIONS

On the uses of cartoons and conversations for wider visions & deeper thinking

So why all the cartoons & conversations ? Isn't this a serious book about the future??

...conversations can show deeper thinking, more than $A+B=C$

...and pictures can explore wider visions

They open up insights

...or certain moments which cannot be defined

Can pictures show alternative realities & 'discourses of resistance'??

Is a picture another kind of map, or mapping??

Can conversations be flirtation, performance, argument or outrage??

Damn right – & much more!!

You might have to draw them yourself

Good for navigation of the inter-connected-ness of things

So pictures & maps can be guides to the unknowable future??

Yes!! we could invent the 'Fut-Nav' & be tech-billionaires

So cartoons & conversations show the inter-connectivity of *Thinking*??

& connectivity of "*Drinking*" haha!!

We need pictures for wider visions

conversations for the deeper human condition

...so with both we're ready for anything...

Figure
1-3

CONCEPTS & FAQs

Frequently Asked Questions on the Deeper City and the synergistic pathways from smart to wise

Where to start?

Start with a messed up world in all kinds of crisis...



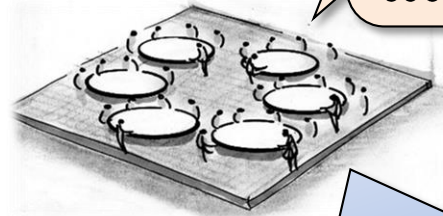
...get people around a table

(with visual thinkers)



ask what they do, who with, & why... draw maps of how it all works or not

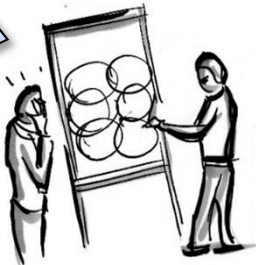
Meaning what – cities, economies, societies??



Everything... then look for new synergies & inter-connections

What are... deeper cities?

Take this Low-Carb City – social, technical, economic, political, all mixed up



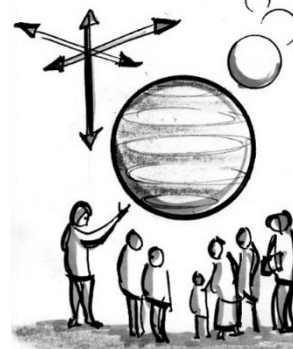
So we look for 'wider' synergies with everyone there

... 'deeper' layers of experience & thinking



... and 'further' causes & effects

This calls for 'collective urban intelligence'



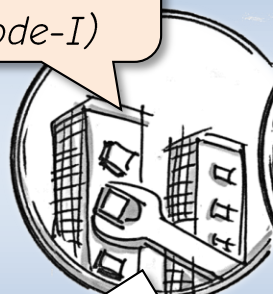
Deeper Cities are where this all happens

It's a journey not an end-point

...smart or 'wise' cities?

With this deeper view we can see 3 'Modes' of synergy & change

This city is a clever machine (Mode-I)



but it can only do what it's told

This 'smart' (Mode-II) city is creative & competitive, but selfish & myopic



Wealth & poverty, pollution & waste

How about this 'wiser' city (Mode-III) with deeper & wider synergies



Real prosperity & sustainability!!

So how to get from here to there??

...synergistic pathways?

How to transform a 'smart' into a 'wiser' system, of deeper collective intelligence?

First look for possible synergies – 'deeper, wider, further'

Then design new value-chains & enterprise models

Look for mile-stones & stepping stones

Signposts & signals



MODE-I & II

Pathways cross the water with renewal & transformation

MODE-III

Then build synergies between the actors to realize the potential value

Then map the pathways & strategies to achieve them

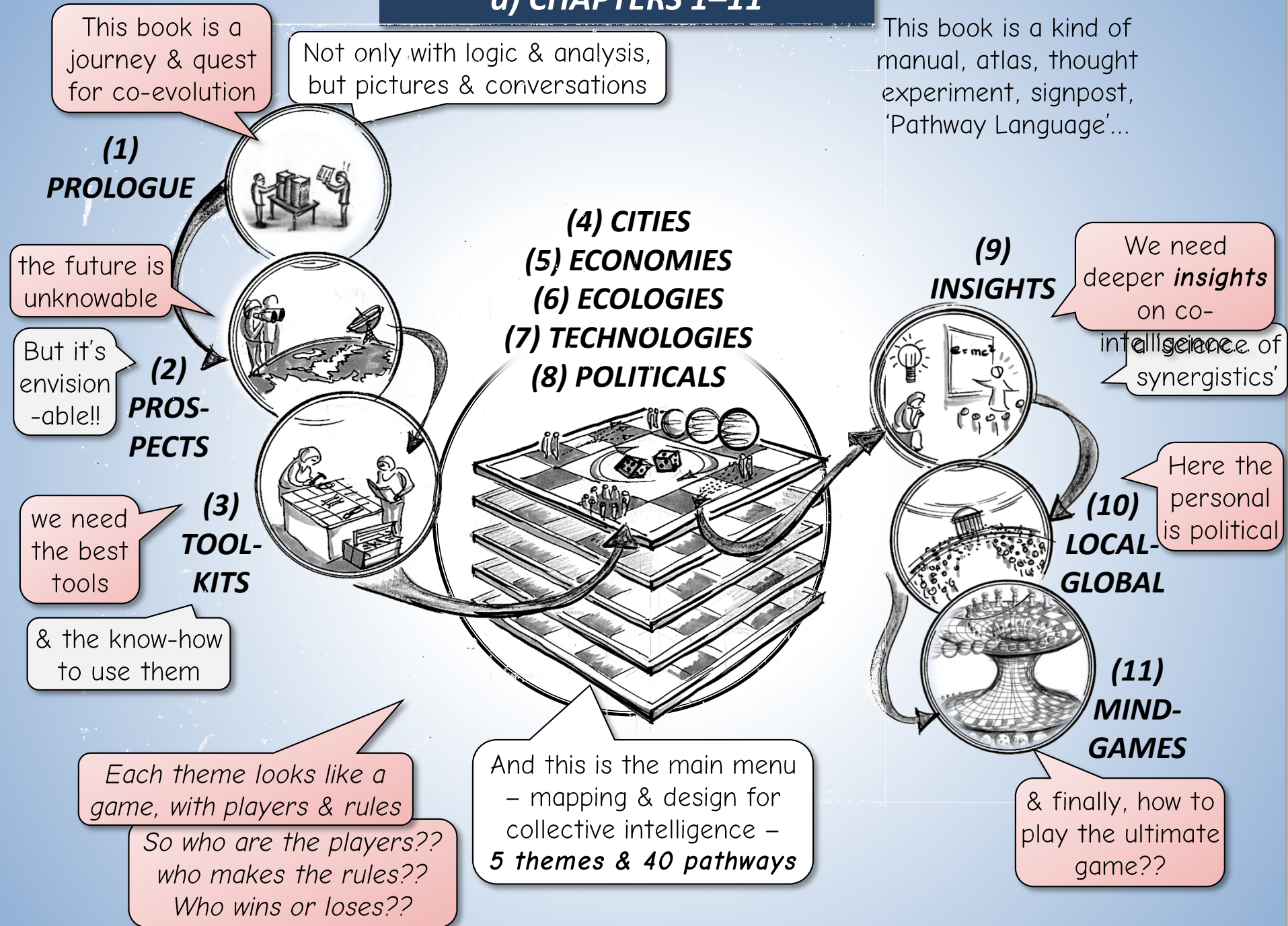
(leaders, artists, thinkers, entrepreneurs already know this)

Figure
1-4

BOOK-IN-USE

On how the Deeper City book is constructed and how to use it

a) CHAPTERS 1-11



(b) 'PATHWAY MAPPING' PAGES

Each of the main Pathway Mapping pages is arranged around the logic of the synergistic method...

To the **left** we see the **Mode I&II** 'clever' & 'smart' syndromes

To the **right** we see the **Mode III** 'wiser' synergies

(Some pages have 3 panels for Mode-I, Mode-II & Mode-III)

'clever & smart' syndromes are easy to draw, 'wiser' can take more time

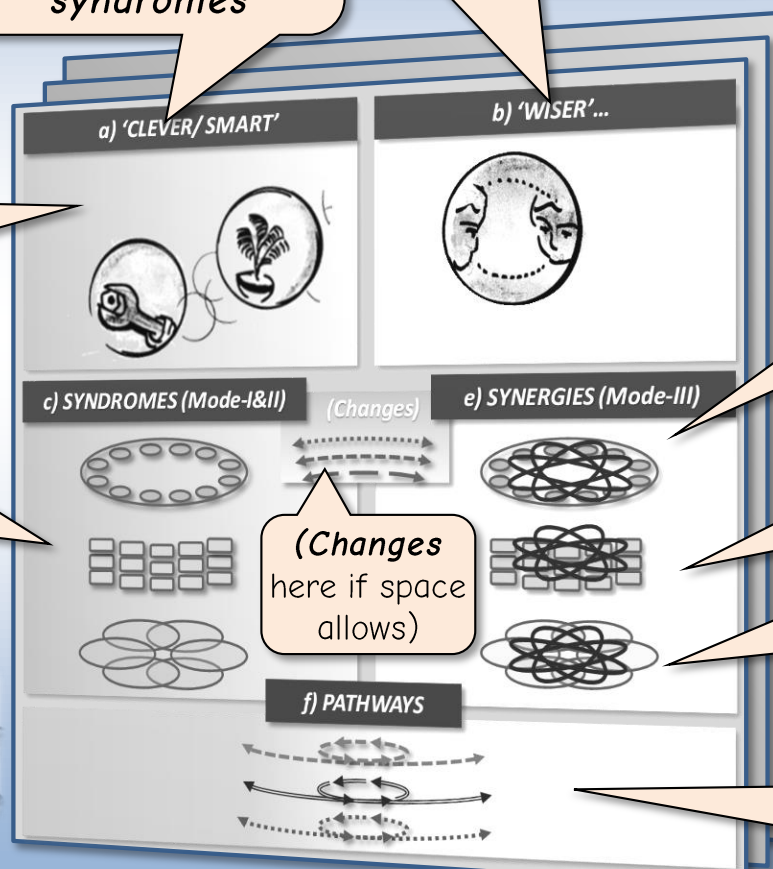
Above are cartoons (for pictures & conversations)

Below are diagrams (for designing or re-wiring cities, economies, societies etc)

Some like cartoons but not diagrams

Some like diagrams but not cartoons

So let's have something for everyone



Actors around the table show new synergies & value-loops

Factors show the metabolism, such as energy or money

Domains of thinking & value show different kinds of reality

Strategies / Pathways: likely directions for new synergies & value-loops